



The Something to Crow About RICHMOND ROOSTER

July 2020

JOLLY JULY

Karen O'Brien

No bought potpourri is so pleasant as that made from one's garden, for the petals of the flowers one has gathered at home hold the sunshine and memories of summer, and of past summers only the sunny days should be remembered. —Eleanor Sinclair Rohde

July — jubilant, juicy, and jolly! Now is the time to really start enjoying the garden, and slow down to savor the summer. Harvesting of herbs, flowers, and vegetables is a daily occurrence, resulting in a sometimes overabundance of bountiful flora. Now, what do we do with it all?

Potpourri, as Eleanor Sinclair Rhode suggests, is a way to remember the scents of the season and save your harvest of fragrant herbs. Pretty much any herb you enjoy can be used for potpourri – which means “rotten pot”! Simply dry your herbs – in a dark, dry space (such as an attic) or even in the trunk of your car – you know how hot it gets in there with the sun beating down. It's important to add a fixative if you want the scent to last longer, as well as some essential oils. Fixatives can be traditional such as oakmoss or orris root, but sandalwood, frankincense, myrrh, whole cloves, cinnamon sticks, or even costmary can be substituted. Be sure that the fixative you use compliments the rest of your scents. Some of them are rather heavy, so you need to experiment with what works best for you.

You can always add non-fragrant items such as small pine cones and dried flower heads (like poppy) to give your potpourri added interest. These woody items will take on the scent of the potpourri if you add some essential oils. Oils will eventually disappear, though, and you may want to add a little more to “freshen” your batch.

It's nice to have a bowl of potpourri sitting out to enjoy the scent. It's preferable, though, to keep it in a covered container, and then uncover it and give it a stir when you want to experience your herbal treasure. This

Copy or cut out pages 12 and 13 for use as an Application for State Election Absentee Ballot



Florentine Iris

will preserve it far longer, and also keep it from getting dusty and dried out.

Herbs that can be used are many – lemon herbs such as lemon basil, lemon thyme, and lemon balm are all wonderful. Rosemary, lavender, rose petals, marjoram, and scented geraniums are great as well. You can add some color by using flowers such as calendula or one of the monardas (like lemon mint) or even add dried citrus peels. Cedar shavings and/or southernwood can be added to make a moth preventative. The possibilities are endless – you are only limited by your imagination and your garden!

Another way to enjoy your herbs is to make an herbal syrup. This is almost as easy as making tea. One syrup I make each year is mint syrup, as my daughter has found that she absolutely loves to use it in her morning coffee. You can also use it as a sweetener for regular black tea (hot or iced), or you can thicken it further and use it as a dressing for a fruit salad, or pour it over pound cake or ice cream. The great thing is you can make it to your taste – either very sweet or less so.



Calendula for color

To make a simple syrup, combine water and sugar in a pot until just boiling. The ratio of sugar to water can be:

1 cup sugar to 2 cups water (light sweetness)

2 cups of sugar to 2 cups of water (regular sweetness)

3 cups sugar to two cups water (very sweet)

Remove the syrup from the heat and add as many mint leaves as will fit in the pan (one to two cups). I use a combination of mints, which seems to round out the flavor. Try spearmint, peppermint, mountain mint, and others you might have. Let the syrup stand for 10-15 minutes. Strain and re-bottle.

You can also make herbal syrups with any fragrant, sweet herb, such as cinnamon basil, lavender, lemon balm, etc. The syrup will keep a week or two in the fridge (sometimes longer) but it is best to freeze small portions so you can have a supply longer. Any fresh herb not strained out (even a small amount) can eventually cause the syrup to go bad.

Stay cool, enjoy your summer, and remember to use your harvest!



Lemon Mint

Cheshire Floral Farm

*We are OPEN and ready to bring
some brightness to your home!*

Offering a wide selection of traditional and unusual varieties of:

- ✿ Vegetable Starter Plants
- ✿ Annuals
- ✿ Perennials – over 100 varieties!
- ✿ Herbs
- ✿ Combination Pots
- ✿ Hanging Baskets
- ✿ Foliage
- ✿ Succulents

NOW GROWING IN

CowPots
The pots you plant!

Will deliver curb side or come by
for self-serving options.

603-313-4124

92 Pleasant Street, Marlborough, NH
robertpowers92@gmail.com

Visit us on  for updates and
to see what is
currently in
bloom, hot,
and available



Joe Davis Place. This idea was conceived by Buddy Blood and approved by the Selectmen. Submitted by Annette Tokanaga, Town Clerk.

HERBS AND NATIVE PLANTS FOR SALE

Call or email for list of available plants.

Heirloom Tomatoes – Hot Peppers

WORKSHOPS and DEMONSTRATIONS

THE GREEN WOMAN'S GARDEN

Karen O'Brien 413-225-2144

www.greenwomansgarden.com



Town Clerk's Calendar

Annette Tokunaga, Town Clerk

The NH State Primary will be held on September 8, 2020. Please see in this issue of *The Rooster* the "COVID-19 Related Registration and Voting Instructions" published by the State of NH. A person may now register to vote by mail and/or vote by absentee ballot if "You are concerned that registering or voting in person will expose you or others to COVID-19." The Application for State Election Absentee Ballot is also being published in this month's *Rooster* in an effort to make this document more easily accessible to Richmond voters.

If you are not registered to vote and would like to register by mail, please contact me. I will send you the complete packet of absentee voter registration forms and instructions. Do not wait to register to vote, whether in person or by mail.

I encourage anyone who is considering voting by absentee ballot to submit the completed Application as soon as possible. Please make sure that you indicate whether you would like to receive the Democratic or Republican ballot after marking the box for the State Primary Election. If you are currently registered as a Democrat or a Republican, you must check the box for that party. If you are registered as Undeclared, you are able to choose which ballot you wish to receive.

The Application for State Election Absentee Ballot cannot be used for multiple elections. Thus, if you anticipate wanting to vote absentee for both the September Primary Election and the November General Election, you must complete two applications, one for each election.

I anticipate receiving absentee ballots about thirty days prior to the September Primary. I will mail out any absentee ballots to those who have requested them as soon as I receive them. I encourage you to return your completed ballot as soon as possible to ensure that your votes are counted!

Town Clerk's office will be closed Thursday, July 9th.

To the Voting Community of Richmond, NH

Walden Whitham, Town Moderator

It seems like another time and place when many of us gathered on March 14th for our Town Meeting, just days before the Governor put forth the stay at home or-

ders and series of closures that are now cautiously starting to reopen. As of this writing, to my knowledge, Richmond has been fortunate to have so far escaped with not even a single case of Covid 19. Apparently there may be some advantage to the social distancing life style many of us in town have practiced for years.

That being said, we do have two elections coming up this year. The State Primary is scheduled for September 8, 2020 and the National Election will be held on November 3, 2020. None of us has a crystal ball and the only prediction I feel confident making is that things will either be better or worse. As your Moderator, I certainly hope that things are better, but it is imperative that we do all that we can to insure the safest environment for all voters as well as our election officials.

Fortunately there are many people who are working toward this goal. There will likely be further guidelines put forth by the State for communities of varying sizes. Until that time we are making plans to move forward incorporating many of the tools we have become accustomed to using already. For our elections, these would include:

Social Distancing: The maximum number of persons allowed at any time into the building will be established. Six-foot line spacing will be maintained, possibly extending into the parking lot at peak times. I am confident that Richmond residents will still have to wait only minutes to vote as opposed to hours in many other communities.

Masks will be strongly recommended. If you do not have one, one will be provided. Remember masks protect others, even more than yourself. Many voters in our town as well as elections workers, are in high risk categories. We ask you to not put them at additional risk and participate in using a mask for the voting process.

There will be hand sanitizer stations provided to protect you and the workers.

Plexiglass screens will be protecting both you and workers at the various stations.

We suggest you bring your own pencil, although of course they will be provided.

Voting booths will be sanitized regularly.

I would like to thank Rick Lewis for being proactive in this venture, and working to help coordinate safety features, as well as designing and building the Plexiglas barriers. The provision of the barriers has been supported and approved by the Selectmen.

Even though we are doing all we can to provide the safest environment for the voting process, I understand how some people, particularly those in higher risk categories, will want to make use of absentee ballots. This process will be fully explained by our Town Clerk, Annette Tokunaga.

Although there is a small possibility that the Town may be able to acquire a vote counting machine by the elections, we must assume we still will be needing our vote counting teams, as well as other election workers. Since many of our workers are seniors or have high risk factors, and may have to decline participation, I am putting out an appeal to anyone who may be willing to assist in this process to step forward and call me at 239-4652 or email at walden12@live.com to discuss what is entailed in ensuring our voting process may continue.

Library News

Wendy O'Brien

At the time of writing this month's article, we are hoping that the RPL will be open to the public by appointment. Please call 239-6164 or email before coming to make sure! We will still offer a delivery option for those who would prefer not to come into the Library. Please contact us to arrange a drop-off time.

library@richmondnh.us

Knitting Circle, Saturdays in July, 10:30 a.m. at the Pavilion. New and experienced knitters, as well as other hand-crafters are welcome (with proper social distancing!).

Summer Reading 2020

"Imagine Your Story" continues in July. Come join us at the Pavilion on Wednesdays at 10:00 for fun fairy tales like you've never seen them before!

July 1: *The Three Little Pigs*: Almost everyone has heard of the 3 little pigs and the big bad wolf, but have

you ever thought about the wolf's point of view? Come hear the wolf's side of the story!

July 8: *Fairy and Gnome Gardening*. Garden gnomes are supposed to be quiet and fairies are supposed to be light and airy, right? We'll read some funny stories about a noisy troublesome gnome and mud fairy, as well as make gnome and fairy gardens to take home.

July 15: *Ogre's Fortress*. We need to solve the puzzle to save the ogre! Be valiant knights as we work together to help the ogre escape.

July 22: *Castles*. The morning will be filled with fun games played in medieval times. Some you may already know, but did you know that they go back hundreds of years?

July 29: *Fairy Tale Science*. Join us as we figure out how to save Jack from the top of the beanstalk; make our own witch's gingerbread houses; and help rescue Aladdin from a hard fall from his flying carpet.

New Titles

I'd Give Anything, Marisa De los Santos

The Last Trial, Scott Turow

Hello Summer, Mary Kay Andrews

The Goodbye Man, Jeffrey Deaver

The Beekeeper of Aleppo, Christy Lefteri

Big Summer, Jennifer Weiner

Fair Warning, Michael Connelly

On Ocean Boulevard, Mary Alice Monroe

Dear Edward, Ann Napolitano

Eagle Station, Dale Brown

Writers and Lovers, Lily King

Historical Society

Jenna Carrol

The Historical Society is currently closed to the public and members of the staff are in the building limited hours each week. We are checking email and voicemail regularly and will respond to all research requests and

Richmond Public Library

19 Winchester Road, Richmond, NH 03470
library@richmondnh.us Tel. 239-6164

Tuesdays & Thursdays 3-7pm
Wednesdays 9-noon
Saturdays 10am-2pm

Catalog:
opac.libraryworld.com/opac/home.php. Library name: Richmond Public. No password required.



Richard P. Drew, LLC

Licensed Land Surveyor

LOT STAKING • LAND PLANNING
BOUNDARY PLANS

266 Tully Brook Road
Richmond, NH 03470-0446

Phone: (603) 239-4147
Cell: (603) 313-6696
Email: rpdrawllc@gmail.com

other questions in a timely manner. We look forward to the day when we can reopen and enjoy your company again in our buildings. We appreciate your support and patience.

To see the plans for phased reopening and other updates, please visit the Historical Society of Cheshire County website: www.hscn.org.

Fitzwilliam's Gem – Widow Gage Town Forest

Carol Jameson and Jon Hill

There is a delightful hike in Fitzwilliam's Widow Gage Town Forest, with well-maintained and well-marked trails, cellar holes, curved stone walls, and a bench overlooking a beaver pond.

The trail begins at the trailhead parking lot and kiosk on Rhododendron Road, about one quarter mile east on Rhododendron Road after the turn-off from Old Troy Road. *Interesting facts* – the beginning of Old Troy Road marks the border between Richmond and Fitzwilliam. Three of the first houses on the west side of Old Troy Road lie in Richmond, while the rest of the houses on the road are in Fitzwilliam.

Fitzwilliam built the parking area and kiosk in 2011, having purchased the Menard family lot with frontage on Rhododendron Road at the 2010 Town Meeting for the purpose of providing better access to the then 59-acre Widow Gage Town forest. Prior to this, the Town Forest could only be accessed from the discontinued Widow Gage Road. There is a map at the kiosk that is also available on the internet on the Fitzwilliam town website. Fitzwilliam owns the town forest; the Monadnock Conservancy holds a conservation easement on it. The trails are well-maintained and well-marked.

The hike within the Town Forest is about two miles – one mile on the blue loop, and an optional .8 mile extension on the red loop. Or you can use the Widow Gage trails to link with the larger M&M trail system



(Metacomet-to-Monadnock trail) or the discontinued Widow Gage Road and the various trails accessible from there. We have hiked the area several times, exploring these options.

Today's hike was about 3 ½ miles, combining the blue loop in the Widow Gage Town Forest with about

RICHMOND HISTORICAL SOCIETY

**Richmond, NH The Town and the Forest,
250+ years of living and growing together.**

Kevin R. Marcotte

603-239-4047
603-209-6423



Quality Craftsmanship - Done right the first time!

Aluminum & Steel Welding
Conveyor Designing and
Maintenance
Projects for the Home

ksprecision@hotmail.com
Check us out on Facebook

Mobile and Shop Welding
Creative Designing
Metal Fabrication
Consulting



Lady slipper and art work of sticks



a one-mile extension up Widow Gage Road to the Troy town line. It was a beautiful day to be out – dappled sunshine, a steady breeze, and beautiful sights to see on our walk.

We entered the mixed hardwood forest at the trail kiosk, many oak, maple and beech, some cherry. In about one quarter mile, we turned right at the well-marked junction of the blue loop. The trail soon passes a massive curved wall – long, wide and majestically curving instead of the usual right angles we see. There is then a massive rock pile on the left, and we entered a pine and hemlock stand. There were a few large bull pines in the grove of otherwise similarly aged trees, bordered by stone walls, indicating land that had been pasture some years earlier. Here we saw the one lady slipper on our walk. We passed the turn-off for the orange connector trail on this trip and continued on the blue loop trail until it joined Old Widow Gage Road. Other times, we have taken the orange connector to join the M&M trail to hike north on the M&M to Little Monadnock Mountain. The M&M trail is in much better condition for accessing the summit of Little Monadnock than is the more heavily trafficked trail from the base at Rhododendron State Park.

Once on Widow Gage Road, we turned right (north) looking for the Widow Gage cellar holes. We had been told that there were large cellar holes for both the barn and the house on the left side of Widow Gage Road, maybe about one-half mile or so further up the road, remnants of the Widow Gage homestead. We had tried to walk parts of this road other times when the water

and mud made it impassable, but it was perfect today thanks to the dry weather of the past few weeks. This portion of the road is mostly bounded by Fitzwilliam Town Forest on the left and state forest on the right, lined by massive stone walls on both sides, walls which were sometimes almost ten feet wide. We came to bog land on the right (although dry today) and impressive stone culverts under both sides of the road where a stream once crossed underneath. Soon after the culverts, we saw an old stone terrace on the left and, soon after that, a gap in the wall on the left that led to the barn cellar hole and tall stone paddocks off of the barn. The stone walls were tall, solid and impressive.



Blue trail marker



Curved wall

Returning to Widow Gage Road, we continued north and soon saw the site of what we had been told was the Gage homestead, marked by stone steps on the left. This cellar hole, too, was large and well-made, also with terracing around it. The Gage family ran the Gage Hotel in Fitzwilliam in the town center across from the Fitzwilliam Inn. The Widow Gage Road/Old Troy Road was a major throughfare to Troy back in the day. Maybe that explains those nice stone steps up to the house.

We had seen an old map with at least one more cellar hole marked on the same side of the road not much further up so we continued north to search for it. The



Log bench

road by this point was no longer bounded by stone walls or state and town forest, it passed through land that was more open, having been logged at various times. We had also passed an old road that was heavily used by ATV's, likely part of the old Little Monadnock Family Trails network.

Sure enough, we came upon a gap in the wall on the left maybe one quarter mile or so further north from the Gage homestead and another cellar hole there, this one had

a massive dead white birch tree in the middle that is also visible from the road.

Figuring that we were less than a quarter mile from the Troy town line, we continued north on the Widow Gage Road to find the stone Fitzwilliam/Troy town line marker.

Happy to have found the cellar holes and the town line marker, we turned back south on Widow Gage Road at the Troy town line to return to the Widow Gage Town Forest. We passed the cellar holes we had explored earlier, and the turn-offs to the M&M Trail both west and, further south down the Widow Gage Road, to the east. The west bound M&M would have taken us to lands behind Morgan Reserve, across Tully Brook to Grassy Hill, and eventually across Route 119 to Monument Road and Greenwoods Road in Richmond, then down to Royalston, Massachusetts where the M&M now becomes the New England Trail (NET) system. The east bound M&M would have taken us to Little Monadnock (bypassing the orange connector trail in Widow Gage forest) and eventually big Monadnock Mountain. It is quite a trail system. We also passed the entrances to the red loop trail on the right side of the road, a loop of approximately .8 miles in the Widow Gage Forest that would have taken us up a hillside and back down to rejoin Widow Gage Road close to where the loop started. Continuing south on Widow Gage Road, we passed the entrance on the left to the blue trail we had entered from earlier. We turned left at the next blue loop trail marker on the left, at the site of the Whitcomb cellar hole.

Kulick's Market

(603) 239-4843 (603) 239-4083

30-08 Warwick Rd.
Winchester, NH 03470

Stanley S. Plifka Jr.
President



Cell (603) 355-7800

Home (603) 239-6040 Fax (603) 239-8335



The Whitcomb cellar hole is a beauty too, in a pretty clearing on the left just before the southern portion of the blue loop trail turns off the road. We were surprised by an art installation someone had made at the entrance to the clearing, right next to the cellar hole! Someone had lain a pattern of branches, pinecones, and twigs in an elaborate design on the ground and against a tree. The curved wall in the blue loop and the myriad of well-built stone walls there were once part of the Whitcomb farm. It is said that Charlie Whitcomb used to sit on his front porch and whittle, saying hello to the people who passed on the road. Passers-by would have once included the people from the old house at the entrance to Rhododendron State Park, which had been owned by the Appalachian Mountain Club before it was donated to the park.

Into the woods on the blue loop trail and approximately half a mile on the well-maintained trail, we head back to the parking lot. We passed the beaver pond on the way and sat on the bench at the overlook, looking at the lilies below and enjoying the pleasant breeze over the pond. Many thanks to the people in Fitzwilliam who made this trail and maintain it so well, preserving access to the network of trails and roads that make our area such a wonderful place to explore.

Some options from Widow Gage Town Forest:

The Blue Loop – A one-mile, easy and pleasant walk on the blue loop, past a curved stone wall, rock piles, and walls, the Whitcomb cellar hole, and the beaver pond overlook with the bench.

Add the Red Loop – Another .8 mile walk with a bit of an uphill portion but nothing too awfully steep. Still moderate. Hiking it counterclockwise will avoid the steepest uphill climb.

Add the M&M trail – Take the blue loop to the Orange Connector to access the M&M trail east or west

(taking it west will mean a short jog on the Widow Gage Road before reentering the woods trail on the opposite side of the road).

Add the Widow Gage Road walk – Take the blue loop to Widow Gage Road, then walk north on Widow Gage Road to Troy or beyond.

May 20, 2020 Council Meeting

Debora B. Pignatelli, Executive Councilor

New Hampshire District 5

Our last Governor and Council Meeting was held on May 20, 2020; Meeting Notes are below. I hope you are all well and staying safe. As always, please feel free to contact me with thoughts, questions, and suggestions.

May 20, 2020 Meeting

The Warrant article, with the CARES money to be distributed, ended up passing. The Governor sent us Councilors about 300 pages of explanation on the Monday night before our Wednesday meeting. I did my best to get through the document and, although I did not agree with some of the decisions, I did not want to hold up the money getting to the people and businesses needing it most. Neither did my fellow Councilors. If the Governor had been up front with an explanation three weeks ago, at the prior meeting, the money would have been approved sooner.

I will continue to ask questions and express my disapproval when we are not provided the information we need to vote intelligently on all contracts. I hope I have your support on this.

Authorized to amend an existing contract with Achievement Therapy Services LLC, Laconia, NH (originally approved by G&C on 4-11-18, item #12), to provide physical therapy services to clients admitted to NH Hospital, by exercising a contract renewal option

by increasing the price by \$190,000 from \$202,500 to \$392,500, and by extending the completion date from June 30, 2020 to June 30, 2022. 34% General, 66% Other Funds.

Authorized the Bureau of Highway Design to amend a contract with Vanasse Hangen Brustlin Inc., (originally approved by G&C on 2-1-17, item #26), for preliminary design of improvements to US 202 at its intersection with NH 124 and NH 137 in the Town of Jaffrey, by retroactively extending the completion date from April 30, 2020 to August 31, 2020. No Additional Funding.

Authorized the State Conservation Committee to enter into a grant with the Town of Rindge, in the amount of \$10,000 for the Conservation Project in the Town of Rindge, Cheshire County. Effective upon G&C approval through April 30, 2022. 100% Other Funds.

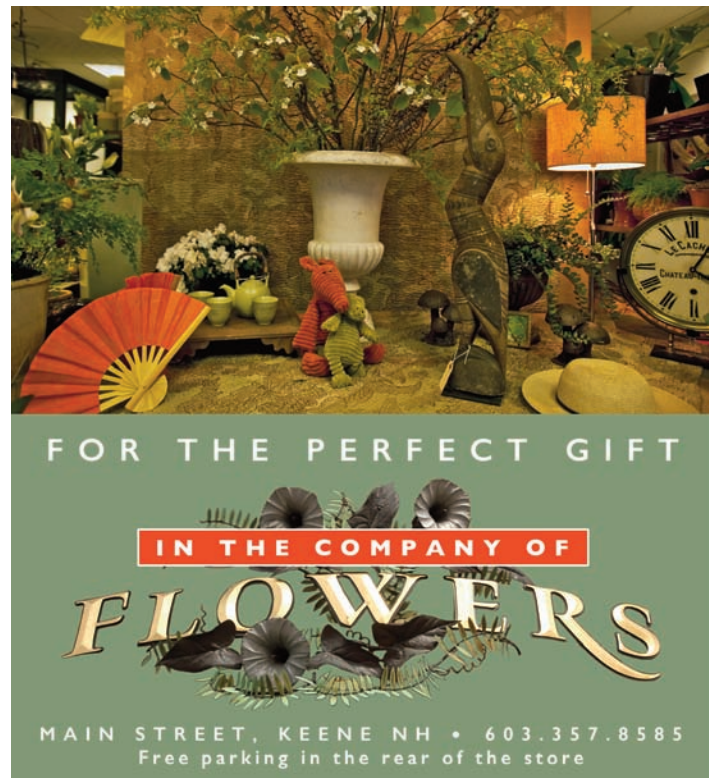
Authorized the State Conservation Committee to enter into a grant with Five Rivers Conservation Trust, in the amount of \$20,000 for Koerber Family Forest Conservation Easement in the Town of Dunbarton, Merrimack County. Effective upon G&C approval through December 1, 2021. 100% Other Funds.

Authorized to award a Local Source Water Protection grant to the Town of Franconia, in the amount of \$10,000 to complete a project to protect public drinking water supplies. Effective upon G&C approval through May 31, 2021. 100% Federal Funds.

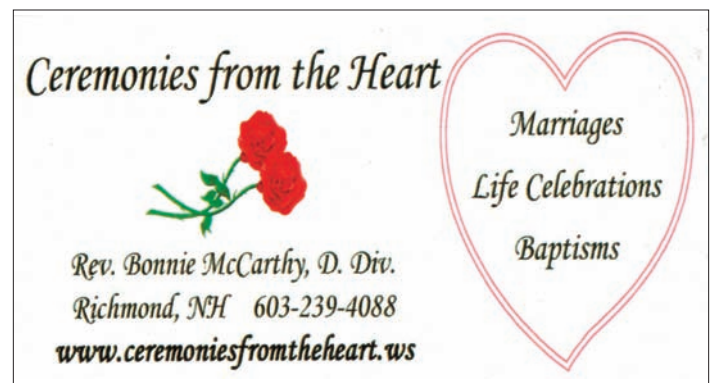
Authorize to award an Aquatic Resource Mitigation Fund grant to the Piscataquog Land Conservancy, New Boston, in the amount of \$400,000 for the purpose of acquiring a 267-acre parcel of land located on Abbott Hill Road in the Town of Mason owned by Barbara B. DeVore Revocable Trust. Effective upon G&C approval through December 31, 2020. 100% ARM Funds.

Authorized expenditures from the Drinking Water and Groundwater Trust Fund with the public schools as detailed in letter dated April 30, 2020. Effective upon G&C approval. 100% Drinking Water Trust Fund.

Authorized the Bureau of Student Support to enter into an amendment to a contract with Creative Educational Consulting LLC, Hollis, NH (originally approved by G&C on 10-17-18, item #34), for training and support, by increasing the price by \$25,000 from \$160,000 to \$185,000 and by extending the completion date from June 30, 2020 to September 30, 2020. 100% Federal Funds.



Authorized consideration of whether the petition of Nicole Kasinskas (age 32) requesting a commuted sentence hearing for the offense of Attempted Second Degree Murder and Conspiracy to Commit First Degree Murder should be granted. The petitioner is not eligible for an annulment. I did not support this request. Some of you may remember the brutal premeditated murder of Ms. Kasinskas' mother. I can see that, at some future time, I might be willing to grant a commutation hearing but, for me, that time is not now. The consideration for a hearing was tabled and will be taken up at our next meeting on June 10th. One of our Councilors needed more time to consider this request. That was the reason for the tabling. I agreed to grant the tabling motion. This is something we do for our fellow Councilors when requested and when there is no harm done by putting off a vote for a couple of weeks.



Authorized the Division of Risk and Benefits to exercise the option to extend the contract with Anthem Health Plans of NH Inc., d/b/a Anthem Blue Cross and Blue Shield, Manchester, NH (originally approved by G&C on 11-8-17, item #84), for the administration of the medical benefit provided to state employees and retirees, by increasing the total amount by \$11,337,025 from \$44,596,000 to \$55,933,025. Effective upon G&C approval through December 31, 2022. General, 17% Federal, 4% Enterprise, 14% Highway, 1% Turnpike, 22% Other Funds. **VOTE: 4-0-1**(*Pignatelli abstained*).

My husband's law firm, Rath, Young and Pignatelli has a lobbying group and one of their clients is Anthem. My husband has nothing to do with lobbying. Because it would cause a perception of a conflict, I did not vote on this contract.

Authorized the Division of Public Works Design and Construction to enter into a contract amendment with Turnstone Corporation, Milford, NH (originally approved by G&C on 3-21-18, item #75), to increase the allowance for Steam Conversion at the State House, State House Annex, and State Library, in Concord, NH, in the amount of \$750,000 from \$8,149,000 to \$8,889,000. Effective upon G&C approval through March 15, 2021. 100% General Funds. **VOTE: 5-0**

Authorized a Working Capital Warrant in the amount of \$1,440,291,542 to cover the payment of expenditures for the month of June 2020.

The Governor nominated the following individuals from District 5 to serve on State Boards and Commissions:

Ryan Terrell, Nashua, NH, State Board of Education
The Council confirmed the following individual from District 5

Nicole Plante, Peterborough, NH to the New Hampshire Correctional Facility for Women Warden

Opening for Worship

Pam Goodell

The Richmond Community United Methodist Church (The Old Brick Church to many) has conducted preparations to reopen its doors in the wake of COVID-19. All the recommended precautions have been taken to ensure a medically safe environment for all. To this end, we have indicated which pews may be used to maintain the six-foot distancing, and we have removed hymnals and Bibles from those pews. The written matter of the services will be projected on screen. Pews, doorknobs,

and bathroom have all been sanitized.

To enter for worship, go up the ramp and through the door on the left. Masks will be required and will be available for those who do not have them. Visitors will be asked to provide contact information, not only so we can get to know you, but also to comply with COVID-19 tracing if the need should arise.

Service starts at 10:30 am. We are pleased to be back in our house of worship. Please come join us.

If you have further questions about COVID-19 precautions being taken, please call Pam at 239-4790 or Alison at 239-4494.

Fresh Fruit, Vegetables, and Dairy Delivered to Richmond, NH

Pam Bielunis

We have now completed two deliveries of fresh fruits, vegetables, and dairy to Richmond's Veterans Hall with great success! The first one was May 15 and we had 14 participants. The second one was on June 10 with 40 participants. The response has been very positive as far as quality and quantity. We have an easy, fast pick-up system in place. One person even used it as a nice gift-a great idea! The company utilizes as many New England vendors as they are able in an effort to keep their company and their suppliers alive through this pandemic situation.

By request, we are planning the next delivery Wed, July 1 so we will have fresh produce for the 4th of July and beyond. Once again, we want to offer this service to all area residents. I can take a few home, but I do not have the refrigeration facilities to keep too many cold. There is no obligation, if you want to try it once or continue as we order about every 3-4 weeks. I will add you to the email group and keep you posted when the next order is happening. Payment can be made by credit/debit directly on their website or you can pay with a check or cash to me when you pick them up and I will put it on my credit card (this is the easiest, but either is fine). If you are planning to order and pay online, please contact me first for instructions as their website is very secure and to be sure it gets delivered to NH. Here is a sample list and the website to check it out: <https://www.simosproduce.com>. They do update their site with special bundles periodically. Contact me with questions or if you would like to order: Pam Bielunis 603-239-6498 or pjb327@msn.com. (Delivery Driver Tips optional). Thank you.

Regular Double Box for \$55

8oz Cheese, Dozen Large Eggs, 1lb Butter, Half-Gallon Whole Milk, Pint Half-and-Half, Half-Gallon Orange Juice, 2 Apples, 1 Bunch Bananas, Half-Pint of Blueberries, 1 Bag Red Grapes, 1 Cantaloupe, 1 English Cucumber, Broccoli, 2 Oranges, 2 Pears, 1 Pineapple, 1 Bag Baby Carrots, 1 Bunch Celery, 2 Heads Iceberg Lettuce, 1 Bag Yellow Onions, 1lb Red Peppers, 1lb Green Peppers, 1-5 lb. bag Potatoes, 1 Pint Grape Tomatoes

Optional Fruit for \$25

Strawberries, Blueberries, Mango, Kiwi, Gala Apples, Pineapple, Cantaloupe, Grapefruit, Oranges, Red Grapes, Lemon, Lime

Optional Veggie for \$25

Sweet potato, Kale, Brussel sprouts, Asparagus, Yellow squash, Zucchini squash, Mushrooms, Avocado, Red onion, Garlic, Tomatoes

Optional Dairy for \$39

Sliced American Cheese, Pepper Jack Cheese, Cheddar Cheese, Cottage Cheese, Greek yogurt, Sour Cream, Dozen Large Eggs, 1lb of Butter, Half Gallon of Whole Milk, Pint of Half and Half, Half Gallon of Orange Juice

Special Cherries and Peaches Bundle for \$17.95

I am Running for Re-election!

Debora Pignatelli

I announce my plan to seek re-election to the Executive Council. If successful, this would be my sixth two-year term, following 10 years in the Senate and 5 years in the House.

In my 10 years on the Council, I have seen it take on a larger role in New Hampshire politics. Council District 5 consists of 32 towns from Hudson to Peterborough to Swanzey and the City of Nashua.

The Executive Council plays an important Constitutional role in New Hampshire government. It has to approve all state contracts exceeding \$10,000. Its work has avoided a lot of controversy in awarding thousands of state contracts annually. Rarely, if ever, do we hear of any controversy in the awarding of contracts totaling hundreds of millions of dollars. The Council helps foster clean government.

The Council is critical in making sure that highly-qualified people are nominated to all of our courts throughout the state including our Supreme Court, our 11 Superior Courts, and our 32 Circuit Courts (District,

Probate, and Family). Our Supreme Court will rule on important legal issues that will set standards for the decades to follow.

As Councilors, we also confirm leaders of state agencies. These include the Attorney General and the leaders of our Departments of Education, of Health and Human Services, Labor, of Employment Security of Environmental Services, of Safety (State Police), and many more. The leaders we choose must carry out the important duties of these agencies consistent with our goals and values.

In addition, the Executive Council confirms nominations to state boards and commissions. These include the Board of Education, the Board of Medicine, and numerous others. The Council rules on all pardons and commutations of criminal convictions. It confirms the Poet Laureate. And, it does so much more.

The Executive Council sets the toll rates on our turnpike system. I am very pleased to report that since 2004, I have worked to eliminate the exit 11 tollbooths in Merrimack – the only NH community unfairly hemmed in by tollbooths. My efforts finally bore fruit in January, with the help of the other Councilors.

One of the essential duties of the Executive Council, as I see it, is to help constituents in their interactions with the various state agencies. A good deal of my time is spent helping small businesses and individual citizens in resolving a whole myriad of issues with State government. The work does not make the headlines.

It is all important work, and I am happy to have the chance to continue doing it. Thank you so much for your past support, and I welcome your help again.

www.debpignatelli.com

Editors' Comments

Jeani Eismont and John Boccalini

As we near the primaries and elections in September and November, we will be screening our advertisements and articles for negative commentaries, name-calling, and the like.

Instead of negative and conflict-based stories and ads that are feeding hostility and anger, especially in our political arena, *The Rooster* will only accept positive comments, articles, and ads.

In respect to the submitters of the rejected submissions, we will be in contact with them to try to remedy the rejection. Thank you

COVID-19 RELATED REGISTRATION AND VOTING INSTRUCTIONS

Registering to vote and voting in person at 2020 elections may pose a health risk to some due to the COVID-19 health emergency. You may register and vote by absentee (by mail) if:

- You are ill due to COVID-19, or caring for someone with COVID-19/symptoms; or
- You are concerned that registering or voting in person will expose you or others to COVID-19.

The term “disability” in the election law extends to these circumstances. Even if you do not consider yourself a person with disability in other circumstances, this term applies for registering to vote and voting in 2020. The opportunity to register and vote absentee due to disability from COVID-19 will apply in 2020, regardless of the future development of the public health crisis. You must sign the “disability” affidavit on the forms for absentee registration and absentee voting.

REGISTERING ABSENTEE (BY MAIL)

You may request absentee voter registration forms and instructions from your clerk before requesting an absentee ballot. Supervisors of the Checklist must review and approve your application. They are required to meet on a date 6 to 13 days before the September 8, 2020 primary and again before the November 3, 2020 general election. Unless the supervisors hold voluntary sessions before then, the supervisors will review your application at that meeting. You are registered to vote when the supervisors approve the application.

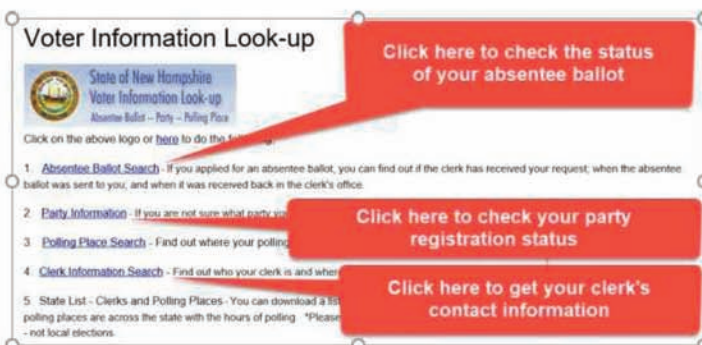
If you request an absentee ballot and are not registered, the clerk will send you both your absentee ballot and your absentee voter registration forms and instructions.

VOTING ABSENTEE (BY MAIL)

Request your absentee ballot from your town/city clerk as early as possible. An Absentee Ballot Application can be downloaded from: <http://sos.nh.gov/ElecForms2.aspx> See below for how to obtain your Clerk’s contact information.

If you are returning your completed absentee ballot by US Mail, the clerk must receive it by 5:00 p.m. on election day. To increase the likelihood the absentee ballot arrives on time and assist with an expected high volume of absentee ballots, we recommend mailing it at least two weeks before the election. After 5 days, check the Voter Information lookup, Absentee Ballot link, to see if your clerk has received the ballot. Contact your clerk if your ballot has not been received. You may also deliver it to the clerk’s office in-person or by a delivery agent until 5:00 p.m. on the day before the election. A delivery agent may deliver it to the clerk at the polling place until 5 p.m. on election day. Family members, nursing home and elder care facility administrators, and a person assisting a voter with a disability who signs the absentee ballot affidavit (limited to delivering ballots for 4 voters) may be a delivery agent. See RSA 657:17: <http://www.gencourt.state.nh.us/rsa/html/LXIII/657/657-17.htm>

Find your clerk’s contact information, your party membership status, or the status of your absentee ballot request here: <http://sos.nh.gov/>



Please Note: To use the following 2 pages, simply cut them out of The Rooster, fill in the blanks and send them in to the Town Clerk's office.



STATE OF NEW HAMPSHIRE
Application for State Election Absentee Ballot-RSA 657:4

Absence, Religious Observance, and Disability

(Uniformed and Overseas Citizen Voters Residing Outside the U.S. use the federal post card application)

**For
Official
Use
Only**

Voter Not
registered

☐

Voter ID # _____

Date Returned: _____

Date Mailed: _____

Date Requested: _____

Last Name: _____
First Name: _____

I. I hereby declare that (check one):

- ☐ I am a duly qualified voter who is currently registered to vote in this town/ward.
- ☐ I am absent from the town/city where I am domiciled and will be until after the next election, or I am unable to register in person due to a disability, and request that the forms necessary for absentee voter registration be sent to me with the absentee ballot.

II. I will be entitled to vote by absentee ballot because (check one):

- ☐ I plan to be absent on the day of the election from the city, town, or unincorporated place where I am domiciled.
- ☐ I am requesting a ballot for the presidential primary election and I may be absent on the day of the election from the city, town, or unincorporated place where I am domiciled, but the date of the election has not been announced. I understand that I may only make such a request 14 days after the filing period for candidates has closed, and that if I will not be absent on the date of the election I am not eligible to vote by absentee ballot.
- ☐ I cannot appear in public on election day because of observance of a religious commitment.
- ☐ I am unable to vote in person due to a disability.
- ☐ I cannot appear at any time during polling hours at my polling place because of an employment obligation. For the purposes of this application, the term "employment" shall include the care of children and infirm adults, with or without compensation.

For use only on the Monday immediately prior to the election: I cannot appear at my polling place on election day because the National Weather Service has issued a winter storm warning, blizzard warning, or ice storm warning for election day applicable to my city, town, or unincorporated place and either (check one):

- ☐ I am elderly or infirm or I have a physical disability, and would otherwise vote in person but I have concerns for my safety traveling in the storm.
- ☐ I anticipate that school, child care, or adult care will be canceled, and would otherwise vote in person but will need to care for children or infirm adults.

Any person who votes or attempts to vote using an absentee ballot who is not entitled to vote by absentee ballot shall be guilty of a misdemeanor. RSA 657:24

III. I am requesting an official absentee ballot for the following election (check only one):

***Required for Primary Elections: I am a member of, or I am now declaring my affiliation with a party and I am requesting a ballot for that party's primary (check only one):**

- ☐ *State Primary Election to be held on September 8, 2020.
- ☐ **Democratic Party** ☐ **Republican Party**
- ☐ State General Election to be held on November 3, 2020

Turn Over – You Must Complete the back side

Page 1 of 2



IV. Applicant's Name (Please Print):

Last Name First Name Middle Name (Jr., Sr., II,III)

Applicant's Voting Domicile (**home**) Address:

Street Number Street Name Apt/Unit City/Town Ward Zip Code

Mail the ballot to me at this address (**if different than the above home address**)

Street or PO Box # Street name Apt/Unit City/Town State Zip Code

Applicant's Phone Number: (____) _____ - _____
(Cell phone or number where you can be contacted prior to and on election day is preferred.)

Applicant's Email Address: _____@_____

Applicant's Signature: _____ Date Signed: _____

The applicant must sign this form to receive an absentee ballot. Any person who witnesses and assists a voter with a disability in executing this form shall print and sign his or her name in the space provided on the application form.

I attest that I assisted the applicant in executing this form because he/she has a disability.

Signature _____ Print Name _____

Mail/fax/or hand deliver this completed form to your local City/Town Clerk.

For local clerk addresses and fax numbers: <https://app.sos.nh.gov> – Click on “Clerk Information Search” tab.

Visit the web site: <https://app.sos.nh.gov/Public/AbsenteeBallot.aspx> to track your absentee ballot. You may verify receipt of your application, obtain the date when your absentee ballot was mailed to you, the date the clerk receives your completed absentee ballot, and after the election learn if your absentee ballot was rejected/not counted and why. Contact your clerk if you have questions regarding the information on the “Voter Information Look-up / Absentee Ballot Search” site.

For Official Use Only:

Voter Verified ☐

Please Note: To use these 2 pages, simply cut them out of The Rooster, fill in the blanks and send them in to the Town Clerk's office.

\$

\$

\$

WANTED TO BUY

\$

\$

\$

Toys
Pottery
Frames
Cameras

Vintage Photographs and Clothing
Blue Decorated Stoneware
Musical Instruments

Tools
Old Radios
Old Telephones
Old Electric Fans

Danny Wahl

We are currently looking to purchase many
different items, including but not limited to these items

603-239-7200

32 Monadnock Hwy., Rt. 12S
Keene, New Hampshire 03431
OFFICE: (603) 352-1972 x204
CELL: (603) 355-0720
FAX: (603) 352-0545
EMAIL: ral4754@gmail.com



Rick Lewis
Associate Broker



BLAIS
& ASSOCIATES
REALTORS®
www.blaisrealestate.com



Bob's Fuel Company, LLC
(603) 239-6721
www.bobsfuelcompany.com

We will heat your home for less!
www.bobsfuelcompany.com

Caitlin Ward
Manager

(603) 239-6721
bobsfuelcompany@gmail.com

21 Warwick Road
Winchester, NH 03470

Keene, NH to Greenfield, MA to
Brattleboro, VT (and everywhere
in between)
Heating Oil * Kerosene * On Road Diesel * Off Road Diesel


Cushing & Sons

Water Wells and Systems
www.cushingandsons.com

Serving Richmond since 1972

Water wells, pump repair service, well inspections,
pressure tanks, hydrofracking of low yield wells.

Out of water? Call us FIRST
Prompt same day service
352-8866

watercolor and mixed media
studio

jean c tidy

Whipple Hill Road
Richmond NH
603.239.6024
jean@welkinwind.com

check out

coop basics

low prices everyday

MON - FRI 7AM - 9PM, SUN 9AM - 9PM
34 CYPRESS ST, KEENE, NH - 355 8008



good.local.food.
MONADNOCKFOOD.COOP/BASICS

monadnock
FOOD CO-OP

Non-GMO Forest Fed Pigs
Chickens & Turkeys
Eggs, Bacon, Ham,
Variety of Cuts

**The Farm At
CROOKED CREEK
HOLLOW**



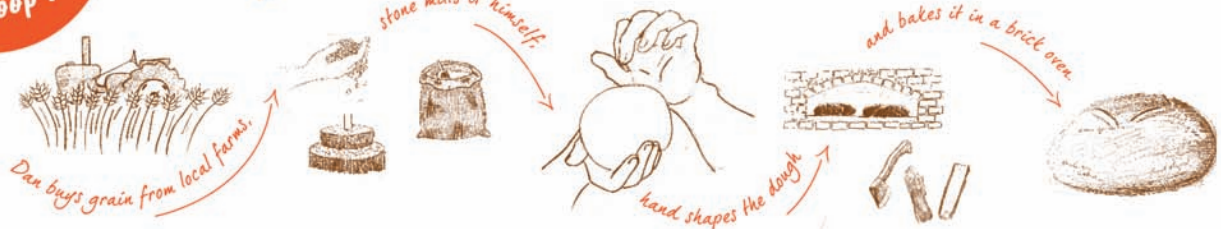
Sausage:
Hot Italian
Smoked Kielbasa
Maple Breakfast
French Apple
Smoked Baja
Basil
Sweet Italian
Jalapeño & Chipotle
Smoked French Apple
Maple & Brown Sugar
Smoked Sweet Italian

frank@cchfarm.com
(h) 603-239-8541
(c) 910-880-1901
www.crookedcreekhollowfarm.com

Available
Friday mornings
at the
Monadnock
Coop!

DAN'S BRICK OVEN BREAD

DANSBREAD.COM



BREAD. UNINVENTED.™

Volunteers Enabling Transportation Inc



VET

Vet is a 501(c)(3), non-profit, all-volunteer organization formed to provide rides from most of Cheshire County to medical appointments primarily for veterans, seniors and others with disabilities.

EIN 81-3974802

603-499-8956
glwelch11@gmail.com

P.O. Box 51
Kenne, NH 03431

CHIMNEY CLEANING TIME

Est. 1982

DON'T WAIT –

**Prevent Chimney Fires!
Rainguards, Relining,
Repairs & Problems Solved.**

**Chimney Cricket Sweep
[603] 239-4636**

The Richmond Heritage Commission



*Helping to bring
Richmond's rich past
...into the present,
...to enhance its future*

105 Old Homestead Hwy www.richmond.nh.gov

Richmond Community United Methodist Church

PASTOR SHARON SARGENT

**Sunday Worship Service
10:30 am**



All are welcome to join our church family!

From
A Friend
on Athol Road

From
Another Friend
on Athol Road

Daniels Family Maple

71 Greenwoods Rd
Richmond, NH 03470

Maple products available
at most times

603-239-7269
Visitors Welcome

 **Gene White, Agent**
Archie D. Jennings Agency, Inc
Personal & Business Insurance
239-4971
P.O. Box 13 30-02 Warwick Rd.
Kulick's Country Mall, Winchester, NH 03470
E-mail: ADJA@myfairpoint.net

GARY'S POWER EQUIPMENT
SALES & SERVICE
(603) 239-4953
WINCHESTER, NH

Mahindra Tractors

Timberwolf Echo Stihl Hustler EXmark Ariens

Gary Rokes
15 Warwick Road
60 Forest Lake Road
Winchester NH 03470

toll free: 800-499-4953
fax: 603-392-0081
garyspower@comcast.net
garysmahindra.com

POWERS
GUARANTEED GENERATORS
THE POWER IS ON

WWW.POWERSGENERATOR.COM

FAMILY OWNED AND OPERATED  FOR MORE THAN 60 YEARS


Frazier & Son
FURNITURE

233 Old Homestead Hwy (Route 32, just south of the airport) • Swanzey, NH
Mon - Fri 10 to 6 • Sat 10 to 5 • Sun 12 to 5 www.frazierandsonfurniture.com
(800) 494-3876 • (603) 352-0337

THE TOADSTOOL BOOKSHOPS
Enchanting Selections of Wonderful Books

Special Orders Welcome Money Orders Accepted
Free Gift Wrapping Out of Print Search
We Ship Anywhere



12 DEPOT SQUARE, PETERBOROUGH, NH 924-3543 M-F 10-6, SAT 10-5 SUN 10-4	12 EMERALD ST. KEENE, NH 352-8815 M-SAT 10am-9pm, Sun 11am-6pm	LORDEN PLAZA RT, 101A, MILFORD, NH 673-1738 M-SAT 9-9, Sun 11-5
--	--	---

TODD ARSENEAULT
WATER CONSULTANT

Hellenbrand®

Aqua-Aid Systems
WATER CONDITIONING & FILTRATION
800-252-8484

631 ROUTE 12 NORTH
KEENE, NH 03431
EMAIL todd@cushingandsons.com

CELL 603-313-1099
OFFICE 603-357-2366
FAX 603-357-8572

Gomarlo's
SUPERMARKET

P.O. Box 585 West Swanzey, NH, 03469

Jerry Gomarlo, Pres.
352-3409

HOURS
DAILY 8 AM - 9 PM
SUN. 8 AM - 8 PM

Garlic And Roasted Red Pepper Dip

Terri O'Rorke

2 C. sour cream (divided in half)
1 7oz. jar of diced, roasted red pepper, drained
1 tsp. crushed garlic
1/2 tsp. each cracked black pepper and salt
1/8 tsp. onion powder

In blender place half the sour cream and remaining ingredients, blending on high speed for about a minute. Stir in remaining sour cream and spoon into a bread bowl for serving. Top with fresh parsley, if desired. Serve with fresh veggies, crackers or steamed shrimp.

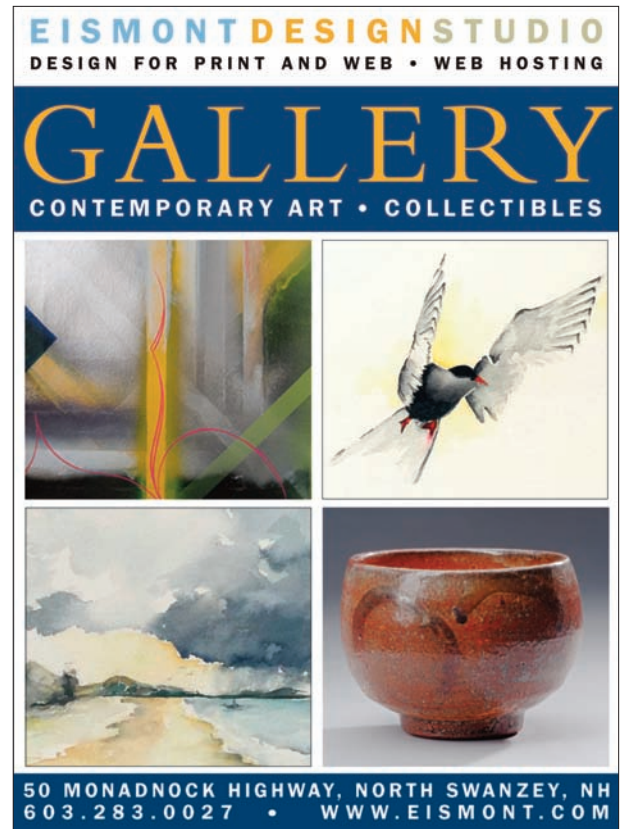
Parks and Recreation

Karen Daugherty

Here in Richmond, we are so fortunate to have a beautiful piece of property to share with friends and neighbors. The town beach has been a place for exercise, relaxation, and socialization. As we continue to enjoy the beach, please be sure to carry out anything that you had brought in. However, please do leave the town



beach signs and equipment. One of our town signs was again taken this year. Parks and Recreation has since purchased a new one, and it is hanging where the other one used to be. On another note, we have had frequent visits from the local ducks and geese. Please refrain from feeding them and encouraging them in our swim and beach area. Last year the water was contaminated by the wildlife droppings, and we hope to avoid that this year. We have put up reflective ribbon to deter the ducks and geese. Additionally, we have made provisions to have dropping and trash removed regularly. We hope to see you out and about soon!



July 10, 2020, Ladies Game Night at the Veteran's Hall
August 15, 2020, 11am "How to Train a Knight" collaborative event with the library.

August , 2020, Ladies Game Night
September 2020, Harvest Festival and Potluck
September 2020, Ladies Game Night
October 2020, Ladies Game Night
November 2020, Ladies Game Night
December 2020, Movie Time at Takodah
January 2021, Winter Event
February 2021, Movie Time at Takodah



EMERGENCY: POLICE/FIRE/RESCUE 9-1-1

The RICHMOND ROOSTER

70 Whipple Hill Road, Richmond, NH 03470



Richmond Rooster Staff

Publisher/Editor: John Boccalini 532-4945

Co-Editors: John Boccalini and Jeani Eismont

Design/Production: Eismont Design

Proofreaders: Pam Goodell, Lew Whittum, Tom LaVoie

Treasurer: Deb Coll

Social Media/Staff Photographer: Debra Carroll

This Month's Contributors:

Pam Bielunis, Jenna Carrol, Karen Daugherty,
Pam Goodell, Jon Hill, Carol Jameson, Karen O'Brien,
Wendy O'Brien, Terri O'Rorke, Debora Pignatelli,
Annette Tokunaga, Walden Whitham,
and *The Rooster* Staff

Online Advertising Rates

Contact: 917-533-2180

Business card size.....\$132

Double size.....\$264

1/4 page.....\$330

1/2 page.....\$550

Full page.....\$1100

Ad Dimensions:

Business Card.....2" h x 3 5/8" w

Double Vertical.....4 1/8" h x 3 5/8" w

Double Horizontal.....2" h x 7 1/2" w

1/4 page.....4.9" h x 3 5/8" w

1/2 page.....4.9" h x 7 1/2" w

Inserts also available by quote or Carol Jameson,
Advertising Manager, email carol.jameson@me.com
or Bonnie McCarthy, Advertising Consultant, at
ceremonies.heart@yahoo.com.

Online Subscriptions Free

Call 532-4945 or email therichmondrooster@yahoo.com
Stories are presented as fiction and are not intended to be
historically accurate in content. Public notices, committee
reports, articles, press releases, and letters to the editor are
printed as received with minor changes according to space.
The Richmond Rooster welcomes comments and article con-
tributions.

Deadline is the 10th of each month.

Email – therichmondrooster@yahoo.com

Rooster Online: <http://therichmondrooster.org>

Town Business Hours

105 Old Homestead Highway, Richmond NH 03470

William Daniels, Doug Bersaw, Andrew Wallace

Mon. 9 AM – 12 PM, 3 – 7 PM, 5:30 – 7 PM for business

7 PM – ? for public concerns)

Wed. 9 AM – 1 PM

Thurs. 9 AM – 12 NOON (unless posted)

Public is welcome to attend. Please call for an
appointment if you have an item for the agenda.

Town Administrator: Susan Harrington

Administrative Assistant: Jennifer Thompson

Town Clerk: Annette Tokunaga

Deputy Town Clerk: Martine Imon

Mon. 9 AM – 12 NOON, 1 – 4 PM, 6 – 8 PM

Wed. 9 – 12 noon, 1 – 4 PM, Thurs. 9 AM – 12 NOON

Tax Collector: Steve Boscarino

Deputy Tax Collector: Ann Dea Whippen

Mon. 6 PM – 8 PM, Wed. 9 AM – 12 NOON

Planning Board:

Meetings held at Veterans Hall.

1st Tues. of the month – 7:30 PM

and 3rd Tues. if needed

Transfer Station and Recycling Facility: 239-8136

Tues. 8 AM – 4 PM, Thurs. 8 AM – 7 PM

Sat. 8 AM – 5 PM

Town Library: Wendy O'Brien, Librarian, 239-6164.

Tues. 3 PM – 7 PM, Wed. 9 AM – 12 NOON

Thurs. 3 PM – 7 PM, Sat. 10 AM – 2 PM

Police (Non Emergency): 355-2000

Fire/Rescue (Non Emergency): 239-4466

Fire Warden: Ed Atkins, 392-2027

Selectmen – 239-4232

Town Clerk – 239-6202

Tax Collector – 239-6106

Road Agent: Elton "Buddy" Blood, II – 400-3629

Visit town on-line: <http://richmond.nh.gov>



Personalized, Trusted Service since 1972



Growing up at the 4-Corners in Richmond, that our parents owned, gave us the life long pleasure of knowing what a small town is all about. We have very fond memories of riding our bikes up and down Rte. 32 & 119, summers at the town beach, skating on the water hole, checking a book out at our little library and looking forward to the annual BBQ. It's a joy to share those special memories when we market your home and welcome someone new to town. Fred Blais, Broker & Ruth Blais Thompson, Licensed Agent



1966

(603) 352-1972

32 Monadnock Hwy. Keene

**BLAIS
& ASSOCIATES
REALTORS®**



SLD PRECISION MACHINE, LLC.
shannon@sldprecision.com
260 Athol Road, Richmond, NH
Shop (603)392-2100 Mobile (603)831-0106

HOLMAN CONTRACTING

Call for a free quote today ...

JOHN HOLMAN

www.HolmanLandscapeMaterials.com



Three New Services

- Tree Trimming
- Wood Chipping
- Stump Grinding

40 YEARS EXPERIENCE

Roads, Driveways, Site Prep, Septic
Installation, Site Excavations,
Trucking, Material Processing & Sales

242-3660
585-9600



The RICHMOND ROOSTER
594 Old Walpole Road, Surry, NH 03431

BULK RATE
US POSTAGE PAID
PERMIT NO. 4
WINCHESTER, NH
03470

CURRENT RESIDENT
RICHMOND, NH 03470